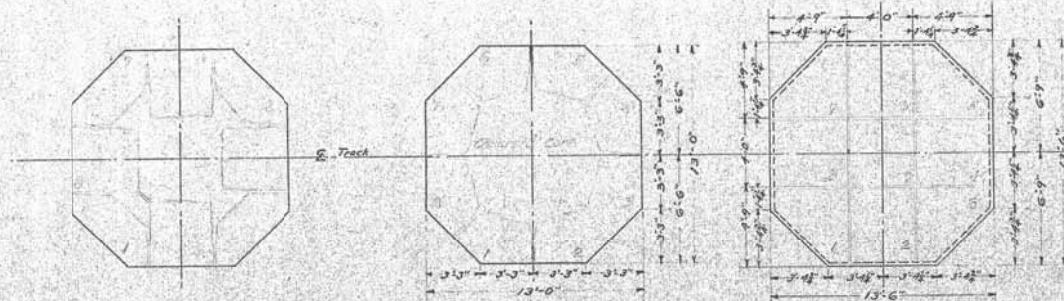


ORDER - O-101  
 SECTION - W  
 GRANITE FOR WEST ABUTMENT  
 M-C-R-R. NICHOLS - RIVER BRIDGE  
 SO - NEWCASTLE - MAINE  
 Scale:  $\frac{1}{4}'' = 1'-0''$

No Allowance in These Figures for Beds and Joints  
 Allow  $\frac{1}{2}''$  for Beds and Joints of Second Class Masonry  
 Allow  $\frac{1}{4}''$  for Beds and Joints of First Class Masonry

FROM THE OFFICE OF  
 H-E FLETCHER CO  
 WEST - CHELMSFORD - MASS  
 Aug 13 1920  
 RF

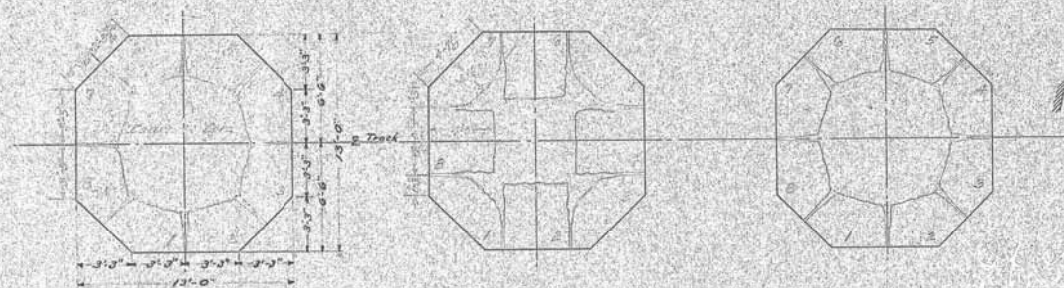
116-257



- COURSE - K -

- COURSE - L -

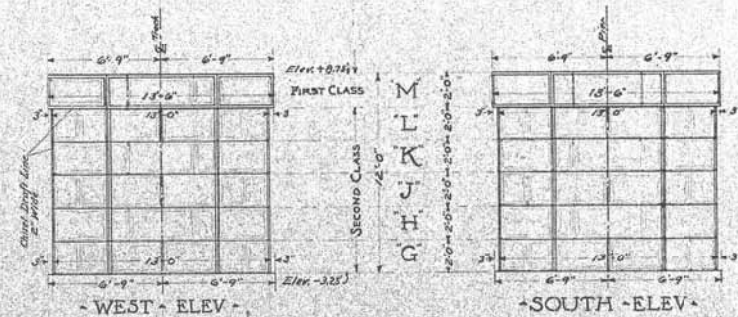
- COURSE - M -



- COURSE - G -

- COURSE - H -

- COURSE - J -

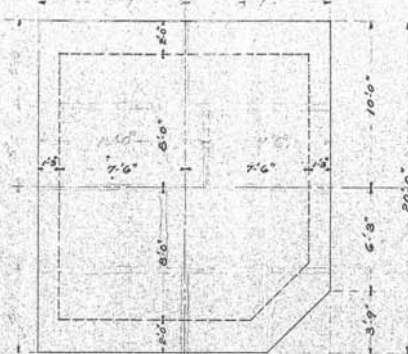


- WEST - ELEV -

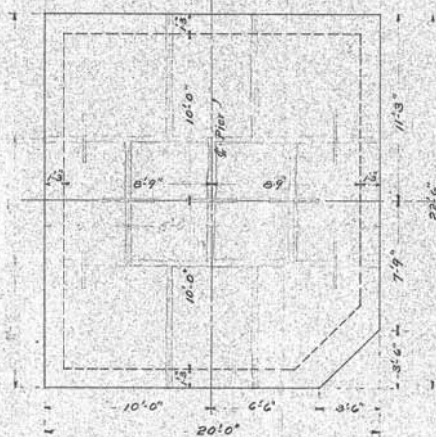
- SOUTH - ELEV -

• ORDER - O-101 •  
 • SECTION - ① •  
 • GRANITE FOR PIER - 1 •  
 • M. C. R. R. NICHOLS - RIVER BRIDGE •  
 • 50 - NEWCASTLE - MAINE •  
 • Scale: -  $\frac{1}{4}$ " = 1'-0" •  
 • No. Allowance In These Figures For Beds And Joints •  
 • Allow  $\frac{1}{2}$ " For Beds And Joints of Second Class Masonry •  
 • Allow  $\frac{1}{4}$ " For Joints of First Class Masonry •

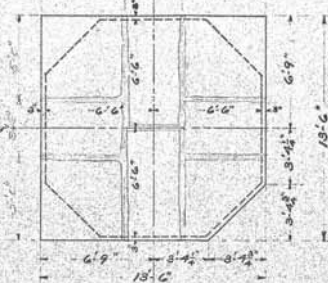
• FROM THE OFFICE OF •  
 • H. E. FLETCHER CO. •  
 • WEST - CHELMSFORD - MASS. •  
 • July - 16, 1920 •



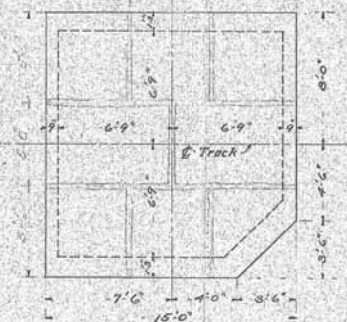
·PLAN · COURSE · B ·



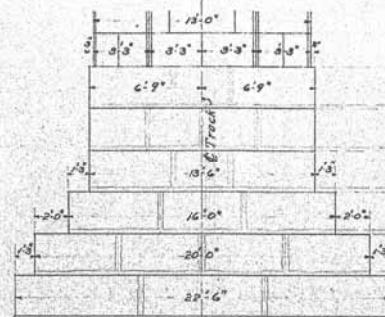
-PLAN- COURSE-A-



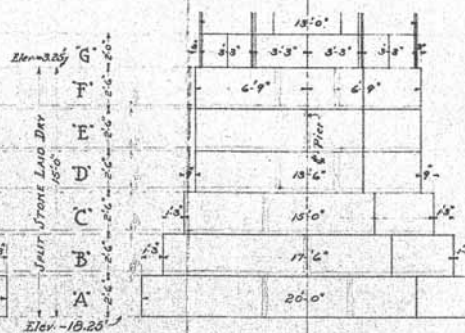
PLAN COURSES D & F:



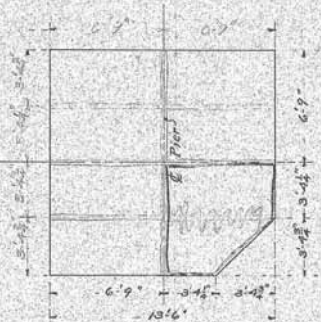
PLAN - COURSE - C -



- WEST - ELEV -



• SOUTH • ELEV •



-PLAN-COURSE-E

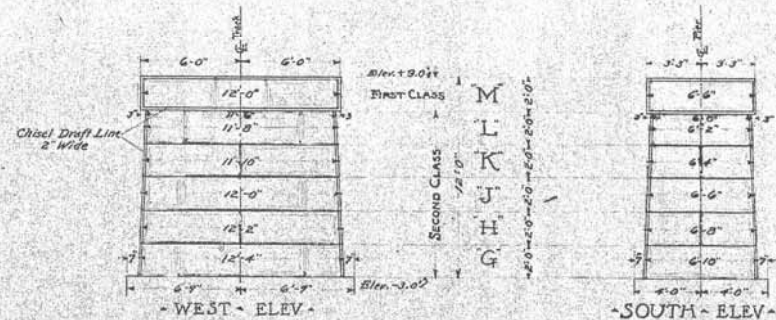
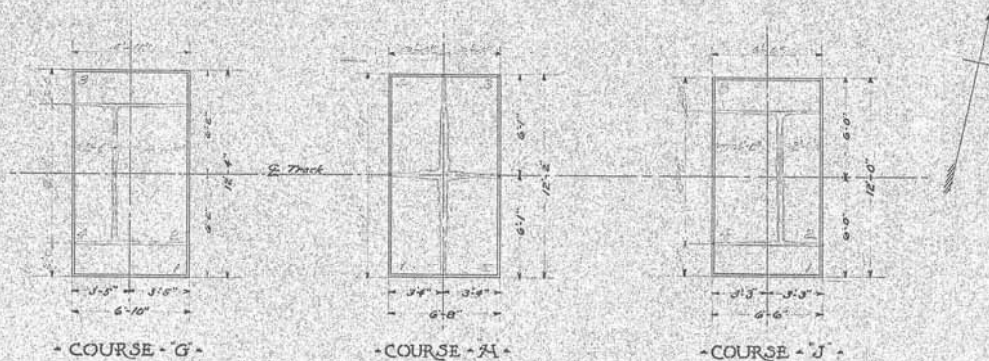
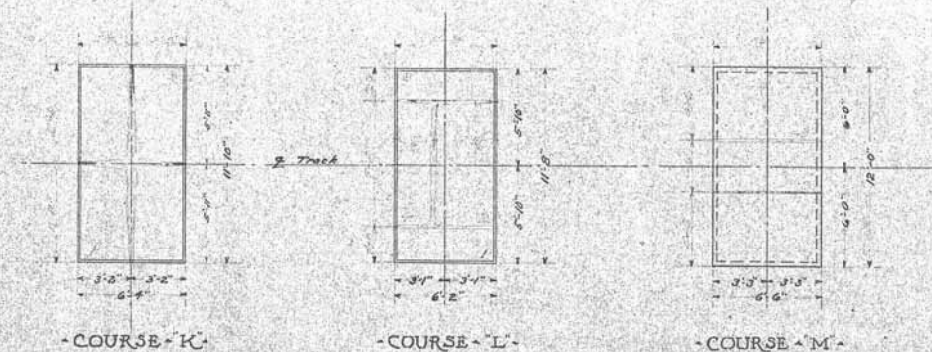
- ORDER - 0-101 -  
 - SECTION - ① -  
 - GRANITE FOR PIER - \*1 -  
 - M-C-R-R. NICHOLS - RIVER BRIDGE -  
 - SO. NEWCASTLE - MAINE -  
 - Scale: -  $\frac{1}{4}$  - = 1'-0" -

No Allowance In These Figures For Beds And Joints.  
Allow For Beds And For Joints.

FROM THE OFFICE OF  
H. E. FLETCHER CO.  
WEST CHILMSFORD MASS.  
June 25, 1920.

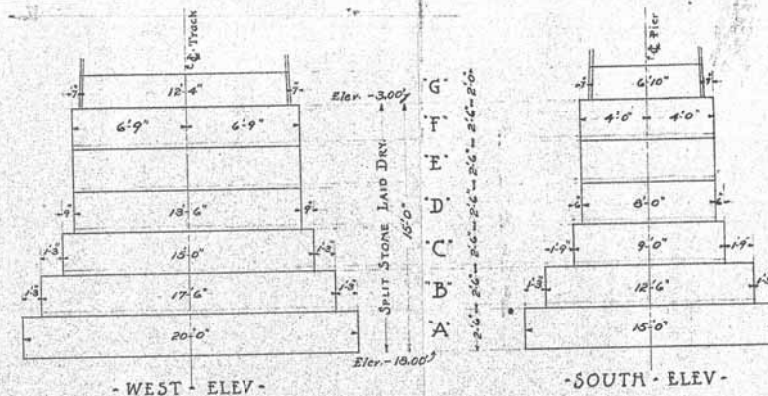
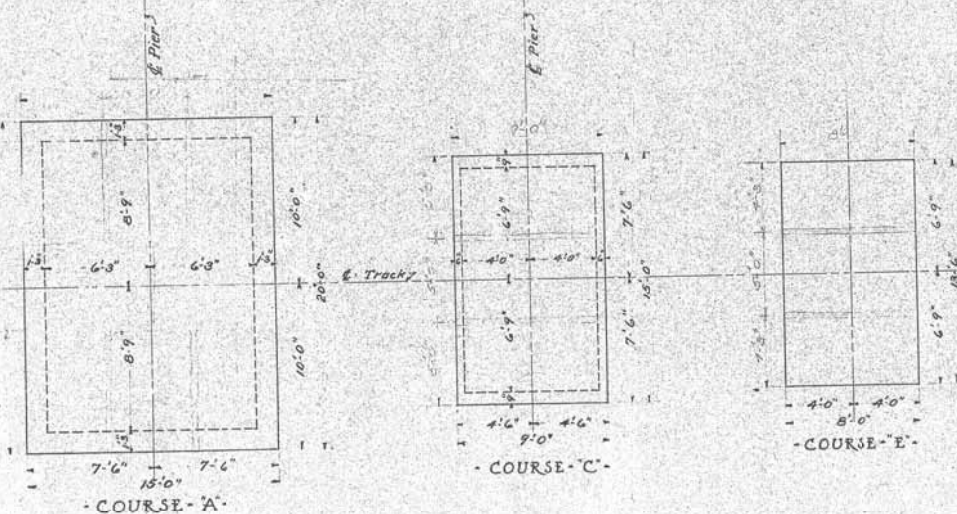
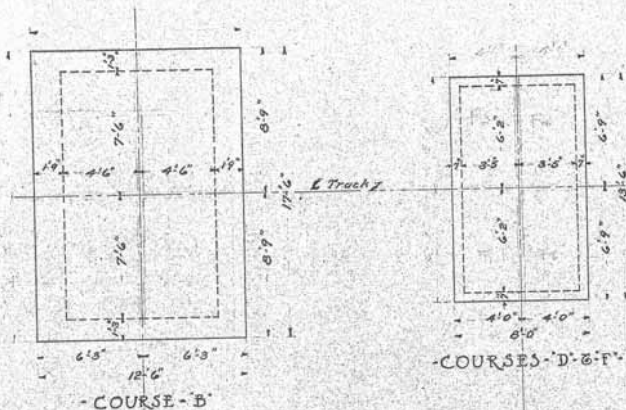
**116-259**





ORDER - 0-101 -  
SECTION - 2 -  
GRANITE FOR PIER - 2 -  
M-C-R-R NICHOLS RIVER BRIDGE -  
50 NEWCASTLE MAINE -  
Scale -  $\frac{1}{4}" = 1'-0"$  -  
No Allowance In These Figures For Beds And Joints -  
Allow  $\frac{1}{2}"$  For Beds And Joints of Second Class Masonry -  
Allow  $\frac{1}{4}"$  For Joints of First Class Masonry -  
FROM THE OFFICE OF -  
J. E. FLETCHER CO -  
WEST - CHELMSFORD - MASS -  
July 16, 1920 -

116-260

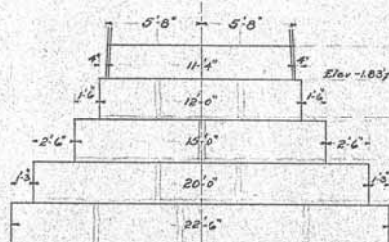


ORDER - 0-101 -  
SECTION - 2 -  
GRANITE FOR PIER - 2 -  
M-C-R-R - NICHOLS - RIVER BRIDGE -  
SO - NEWCASTLE - MAINE -

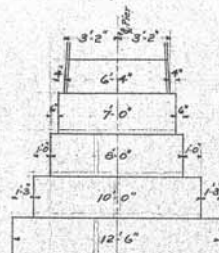
Scale -  $\frac{1}{4}'' = 1'-0''$  -  
No Allowance In These Figures For Beds And Joints.  
Allow For Beds And Joints.

FROM THE OFFICE OF -  
H-E-FLETCHER-CO -  
WEST - CHELMSFORD - MASS -  
June 25, 1920 -

116-261



- WEST - ELEV -

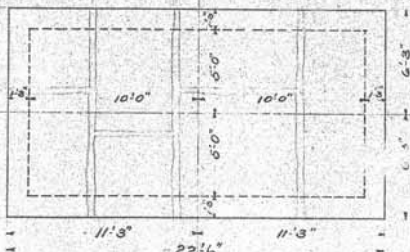


- SOUTH - ELEV -

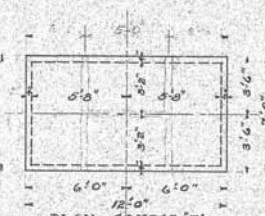
- PIER - 3 -  
- SECTION - 3 -



- PLAN - COURSE - D -



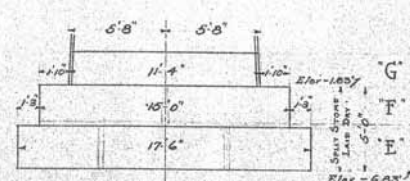
- PLAN - COURSE - C -



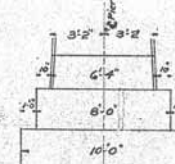
- PLAN - COURSE - F -



- PLAN - COURSE - E -

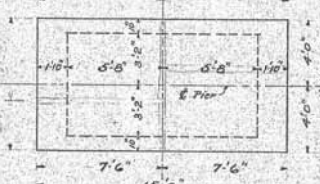


- WEST - ELEV -

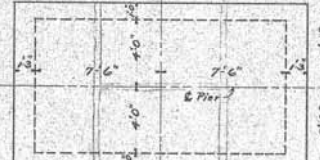


- SOUTH - ELEV -

- PIER - 4 -  
- SECTION - 4 -



- PLAN - COURSE - F -



- PLAN - COURSE - E -

- ORDER - 0-101 -

- GRANITE - FOR - PIERS - 3 - & - 4 -  
- M. C. R. R. NICHOLS - RIVER - BRIDGE -  
- 30 - NEWCASTLE - MAINE -

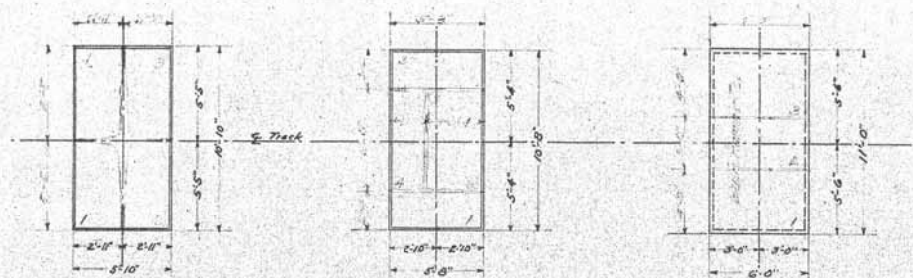
- Scale - 1/4" = 1'-0"

- No - Allowance - In - These - Figures - For - Beds - And - Joints -  
- Allow - For - Beds - And - For - Joints -

- FROM - THE - OFFICE - OF -  
- H. E. FLETCHER - CO. -  
- WEST - CHELMSFORD - MASS. -  
- June 26, 1920 -

116-262

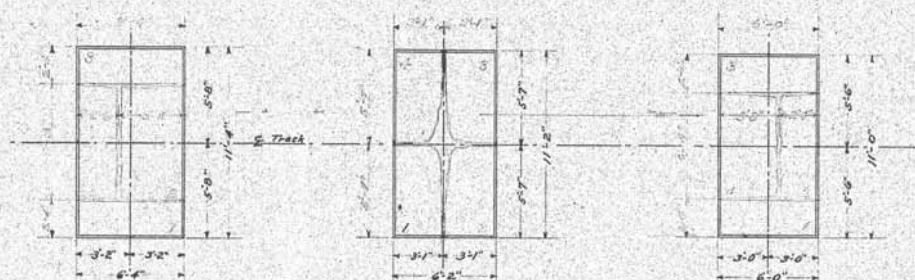




- COURSE - K -

- COURSE - L -

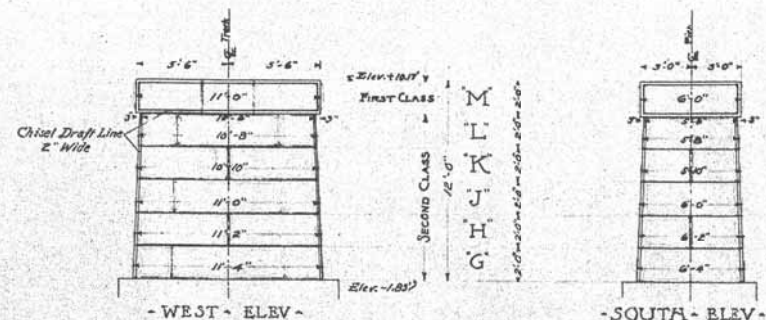
- COURSE - M -



- COURSE - G -

- COURSE - H -

- COURSE - J -



- WEST ELEV -

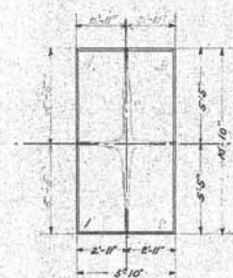
- SOUTH ELEV -

ORDER - O-101 -  
SECTION - 3 -  
GRANITE FOR PIER - 3 -  
M-C-R-R NICHOLS RIVER BRIDGE -  
SC - NEWCASTLE - MAINE -  
Scale: -  $\frac{1}{4}$  " = 1'-0" -

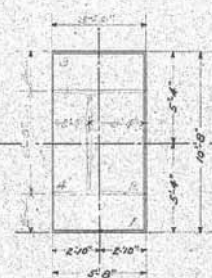
No Allowance in These Figures for Beds and Joints.  
Allow  $\frac{1}{2}$  " for Beds and Joints of Second Class Masonry.  
Allow  $\frac{1}{4}$  " for Joints of First Class Masonry.

FROM THE OFFICE OF  
H. E. FLETCHER CO.  
WEST - CHELMSFORD - MASS.  
July 16, 1920  
WP

116-263



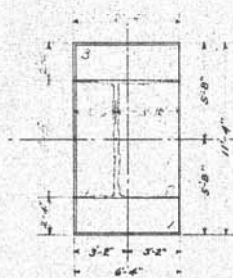
- COURSE - K -



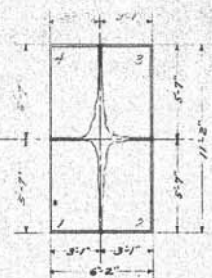
- COURSE - L -



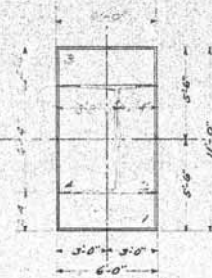
- COURSE - M -



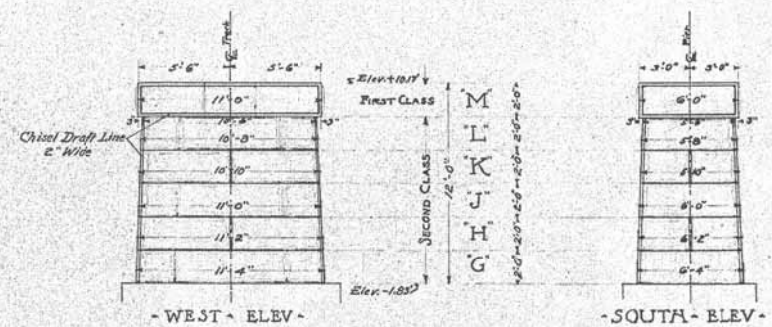
- COURSE - G -



- COURSE - A -



- COURSE - J -



- WEST - ELEV -

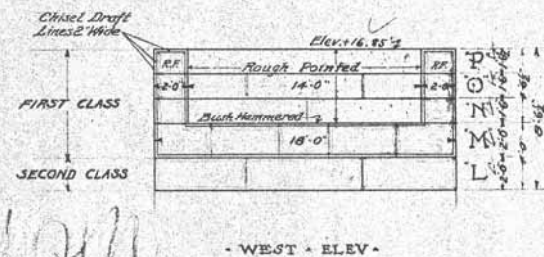
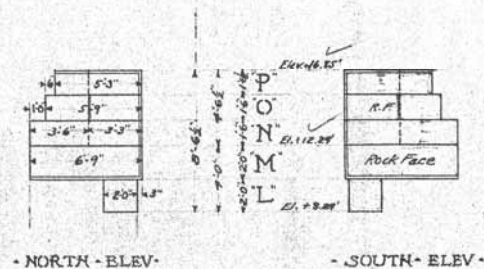
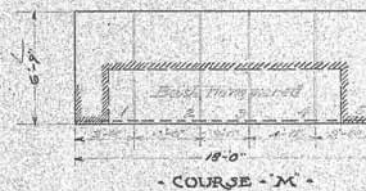
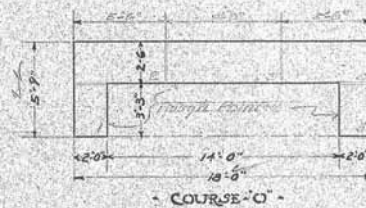
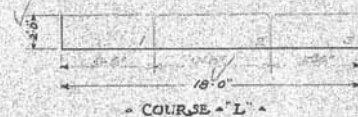
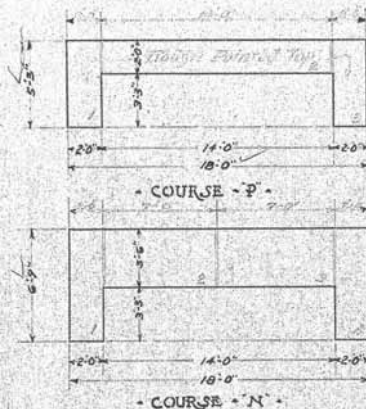
- SOUTH - ELEV -

ORDER - O-101 -  
SECTION - 4 -  
GRANITE FOR PIER - 4 -  
M-C-R-R. NICHOLS - RIVER BRIDGE -  
SC - NEWCASTLE - MAINE -

Scale: - 1" = 1'-0" -  
No Allowance in These Figures for Beds and Joints.  
Allow 1/2" for Beds and Joints of Second-Class Masonry.  
Allow 1/4" for Joints of First-Class Masonry.

FROM THE OFFICE OF  
A. E. FLETCHER, CO.  
WEST - CHELMSFORD - MASS.  
July 16, 1920





• ORDER - O-101 •  
 • SECTION - E •  
 • GRANITE FOR EAST ABUTMENT •  
 • M-C-R-R NICHOLS RIVER BRIDGE •  
 • 30 NEWCASTLE - MAINE •  
 • Scale -  $\frac{1}{4}$  - 1' - 0' •

• No Allowance in These Figures For Beds And Joints •  
 • Allow  $\frac{1}{2}$  • For Beds And Joints of Second Class Masonry •  
 • Allow  $\frac{1}{4}$  • For Beds And Joints of First Class Masonry •

• FROM THE OFFICE OF •  
 • A. E. FLETCHER CO •  
 • WEST CHELMSFORD - MASS •  
 Aug 4th 1920  
 TP

116-265